

# Stonehill College

The Cooperative Institutional Research Program  
CIRP Freshman Survey  
Comparative Data, 1998, 2001, 2005 and 2008



*Prepared By: Office of Planning and Institutional Research*

# The CIRP Freshman Survey

- The Cooperative Institute Research (CIRP) established in 1966.
- CIRP is now the nation's largest and longest empirical study of higher education, including the Freshman Survey, College Student Survey, and Faculty Survey.
- The CIRP Freshman Survey consists of demographic characteristics, secondary school experience, college finance, orientation toward college, expectations of the college experience, degree goals and career plans, along with attitudes, values and life goals.

# Comparison Group: Stonehill's Peer Group

	2008	2005	2001	1998
Allegheny College (PA)	2	2	2	2
Bates College (ME)	2	2	2	2
Colby College (ME)	2	2	2	2
Connecticut College (CT)	2	2	2	2
Dickinson College (PA)	2	1	1	2
Fairfield University (CT)	1	2	2	2
Gettysburg College (PA)	2	2	2	2
Muhlenberg College (PA)	1	1	2	2
Providence College (RI)	2	2	2	2
St. Lawrence (NY)	2	2	2	2
St. Mary's College (IN)	2	2	2	2
St. Michael's College (VT)	2	2	1	
Susquehanna University (PA)	1	1	2	2
Trinity College (CT)	1	2	2	2

1= Institution participated in the survey; 2= Institution provided sufficient data to be included in the national norm

# Methodology

<b>Who</b>	<ul style="list-style-type: none"><li>❖ Stonehill College First-Time, First-Year students in Classes 2002, 2005, 2009 and 2012.</li></ul>
<b>When</b>	<ul style="list-style-type: none"><li>❖ Normal administration every three years. Data collection occurs during Fall Orientation.</li></ul>
<b>How</b>	<ul style="list-style-type: none"><li>❖ Surveys administered in classroom setting using paper and pencil.</li><li>❖ Orientation Leaders/Peer Mentors responsible for escorting the orientation groups to selected room assignments.</li></ul>
<b>What</b>	<ul style="list-style-type: none"><li>❖ The survey covers a wide range of student characteristics: parental income and education; ethnicity; financial aid; secondary school achievement and activities; educational and career plans; and values, attitudes, beliefs, and self-concept.</li></ul>

# Sample Composition

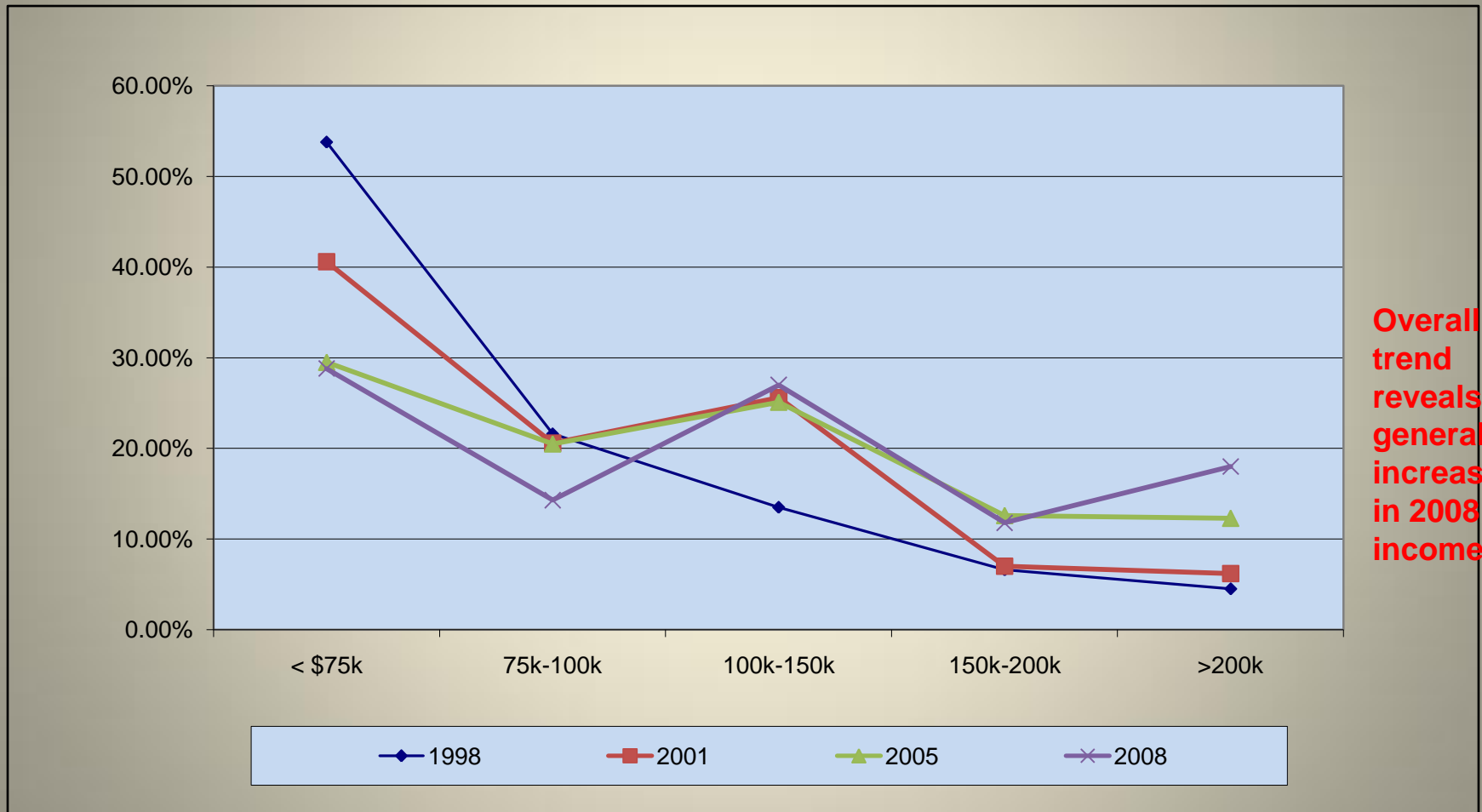
- ❖ Four year gap between 2001 and 2005.
- ❖ Distributed to 1,918 first-time, first-year students, to date.
- ❖ Response rate across all four years is 80.5%.
- ❖ Higher than average participation rate in 2008.

First-Time, First-Year Students	Total Completes	Total Sample	Response Rate
1998	350	531	65.9%
2001	550	588	93.5%
2005	492	618	79.6%
2008	522	634	82.3%

2.7%  
increase in  
participation  
rate

# Parent Information

# Parental Income Comparison



Base: Total Respondents – 1998 (n=334), 2001 (n=485); in 2005 (n=430); in 2008 (n=433)

# Parents' Educational & Religious Background

	Male				Female				Total			
	1998	2001	2005	2008	1998	2001	2005	2008	1998	2001	2005	2008
<b>Father's Education At Least Undergraduate Degree</b>	58%	56%	65%	69%	63%	60%	66%	71%	<b>61%</b>	<b>58%</b>	<b>66%</b>	<b>71%</b>
<b>Mother's Education At Least Undergraduate Degree</b>	54%	55%	66%	66%	57%	56%	68%	66%	<b>56%</b>	<b>56%</b>	<b>67%</b>	<b>66%</b>
<b>Father's Religious Preference Roman Catholic</b>	72%	71%	66%	65%	72%	73%	65%	60%	<b>72%</b>	<b>72%</b>	<b>66%</b>	<b>62%</b>
<b>Mother's Religious Preference Roman Catholic</b>	74%	69%	72%	72%	76%	76%	70%	69%	<b>75%</b>	<b>72%</b>	<b>71%</b>	<b>70%</b>
<b>Student's Religious Preference Roman Catholic</b>	74%	66%	67%	63%	75%	75%	64%	65%	<b>75%</b>	<b>71%</b>	<b>65%</b>	<b>64%</b>

Base: Question -Father's Education – 2008 (n=509), 2005 (n=482), 2001 (n=550), 1998 (n=357)  
 Question - Father's Religious Preference - 2008 (n= 489), 2005 (n=457), 2001 (n=527), 1998 (n=340)  
 Question - Mother's Education - 2008 (n=510), 2005 (n=485), 2001 (n=555), 1998 (n=357)  
 Question - Mother's Religious Preference– 2008 (n=497), 2005 (n=462), 2001 (n=537), 1998 (n=346)  
 Question - Student's Religious Preference - 2008 (n=507), 2005 (n=476), 2001 (n=551), 1998 (n=358)


# Parent's Top Five Occupations

	FATHERS					MOTHERS			
Occupation	2008	2005	2001	1998	Occupation	2008	2005	2001	1998
<b>Business</b>	<b>34%</b>	<b>38%</b>	<b>38%</b>	<b>37%</b>	<b>Education (elementary)</b>	<b>13%</b>	<b>13%</b>	<b>15%</b>	<b>19%</b>
<b>Skilled worker</b>	6%	9%	10%	9%	<b>Business</b>	12%	15%	12%	12%
<b>Engineer</b>	7%	8%	9%	9%	<b>Homemaker (FT)</b>	11%	14%	12%	11%
<b>Lawyer</b>	4%	5%			<b>Nurse</b>	11%	10%	10%	10%
<b>Doctor</b>	5%				<b>Education (secondary)</b>	6%	5%		
<b>Education (secondary)</b>		3%	3%	5%	<b>Business (clerical)</b>			7%	10%
<b>Semi-skilled worker</b>			3%	2%					
<b>Unemployed</b>	2%	1%	3%	3%	<b>Unemployed</b>	4%	4%	4%	4%

Base: Question - Father's occupation – 2008 (n= 497), 2005 (n= 471), 2001 (n=542), 1998 (n=356);  
Mother's occupation – 2008 (n= 501); 2005 (n=475), 2001 (n=544), 1998 (n=358)

# Student Information

# 2008 New CIRP Questions

How would you describe the racial composition of the: 	1. High school I last attended?			2. Neighborhood where I grew up?		
	Male	Female	Total	Male	Female	Total
<b>Completely non-White</b>	1.1%	0.9%	1.0%	2.3%	2.6%	2.5%
<b>Mostly non-White</b>	5.9%	5.4%	5.6%	4.6%	2.2%	3.1%
<b>Roughly half non-White</b>	10.7%	14.2%	12.9%	8.1%	8.0%	8.0%
<b>Mostly White</b>	69.5%	66.3%	67.4%	47.4%	50.0%	49.1%
<b>Completely White</b>	12.8%	13.3%	13.1%	37.6%	37.2%	37.3%

# 2008 New CIRP Question

	<b>3. Do you have a disability?</b>		
	Male	Female	Total
<b>Learning disability</b>	<b>4.8%</b>	<b>3.6%</b>	<b>4.0%</b>
<b>Partially sighted or blind</b>	0.5%	1.2%	1.0%
<b>Health-related</b>	0.5%	1.2%	1.0%
<b>Orthopedic</b>	0.5%	0.9%	0.8%
<b>Speech</b>	0.5%	0.3%	0.4%
<b>Hearing</b>	0.0%	0.6%	0.4%
<b>Other</b>	0.5%	0.0%	0.2%

Base: Total Respondents (n=522)

# Average High School GPA (%)

	1998	2001	2005	2008	Peer Group
A or A+	14.8%	17.7%	18.9%	<b>21.8%</b>	<b>25%</b>
A-	28.7%	38.1%	36.2%	<b>*40.1%</b>	<b>33%</b>
B+	32.8%	27.2%	29.7%	<b>26.2%</b>	<b>25%</b>
B	20.5%	13.2%	12.3%	<b>10.6%</b>	<b>13%</b>
B- or lower	3.3%	3.8%	3.0%	<b>1.4%</b>	<b>3.1%</b>

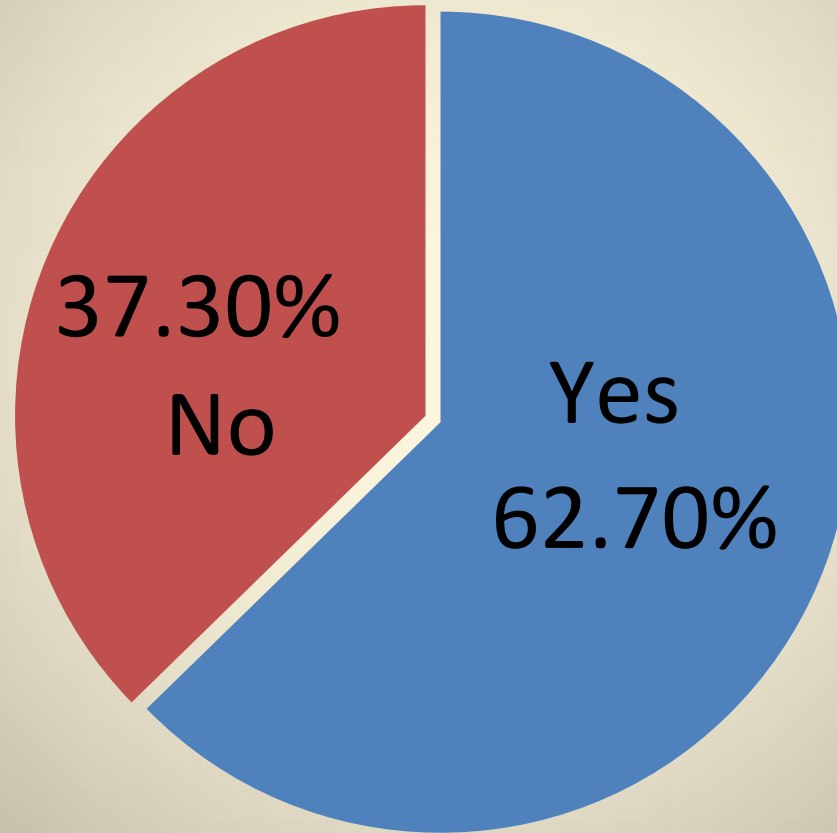
**\*Statistically significant @ 90% confidence level**

*Total Respondents – 1998 (n=366), 2001 (n=559), 2005 (n=472 ); 2008 (n=519), Peer Group (n=6,863)*

# To how many colleges other than this one did you apply for admission this year?

	2005			2008		
	Male	Female	Total	Male	Female	Total
None	4.4%	7.3%	<b>6.2%</b>	3.2%	4.2%	<b>3.9%</b>
One	1.6%	2.7%	<b>2.3%</b>	1.6%	2.1%	<b>1.9%</b>
Two	3.8%	3.0%	<b>3.3%</b>	4.3%	4.2%	<b>4.3%</b>
Three	12.6%	7.6%	<b>9.5%</b>	7.0%	8.2%	<b>7.7%</b>
Four	18.6%	14.6%	<b>16.1%</b>	12.8%	15.2%	<b>14.3%</b>
Five	21.3%	19.6%	<b>20.2%</b>	14.4%	15.2%	<b>14.9%</b>
Six	15.3%	16.3%	<b>15.9%</b>	13.4%	14.8	<b>14.3%</b>
Seven to Ten	17.5%	26.2%	<b>22.9%</b>	37.4	28.5	<b>31.7%</b>
Eleven or more	4.9%	2.7%	<b>3.5%</b>	5.9%	7.6%	<b>7.0%</b>

# Were you accepted by your first choice college?



# Is this college your....

	2005			2008		
	Male	Female	Total	Male	Female	Total
<b>First Choice?</b>	58.4%	65.5%	<b>62.8%</b>	41.2%	52.3%	<b>48.3%</b>
<b>Second Choice?</b>	25.4%	22.4%	<b>23.5%</b>	36.9%	30.5%	<b>32.8%</b>
<b>Third Choice?</b>	13.0%	7.2%	<b>9.4%</b>	14.4%	11.5%	<b>12.5%</b>
<b>&lt; Third Choice?</b>	3.2%	4.9%	<b>4.3%</b>	7.5%	5.7%	<b>6.4%</b>



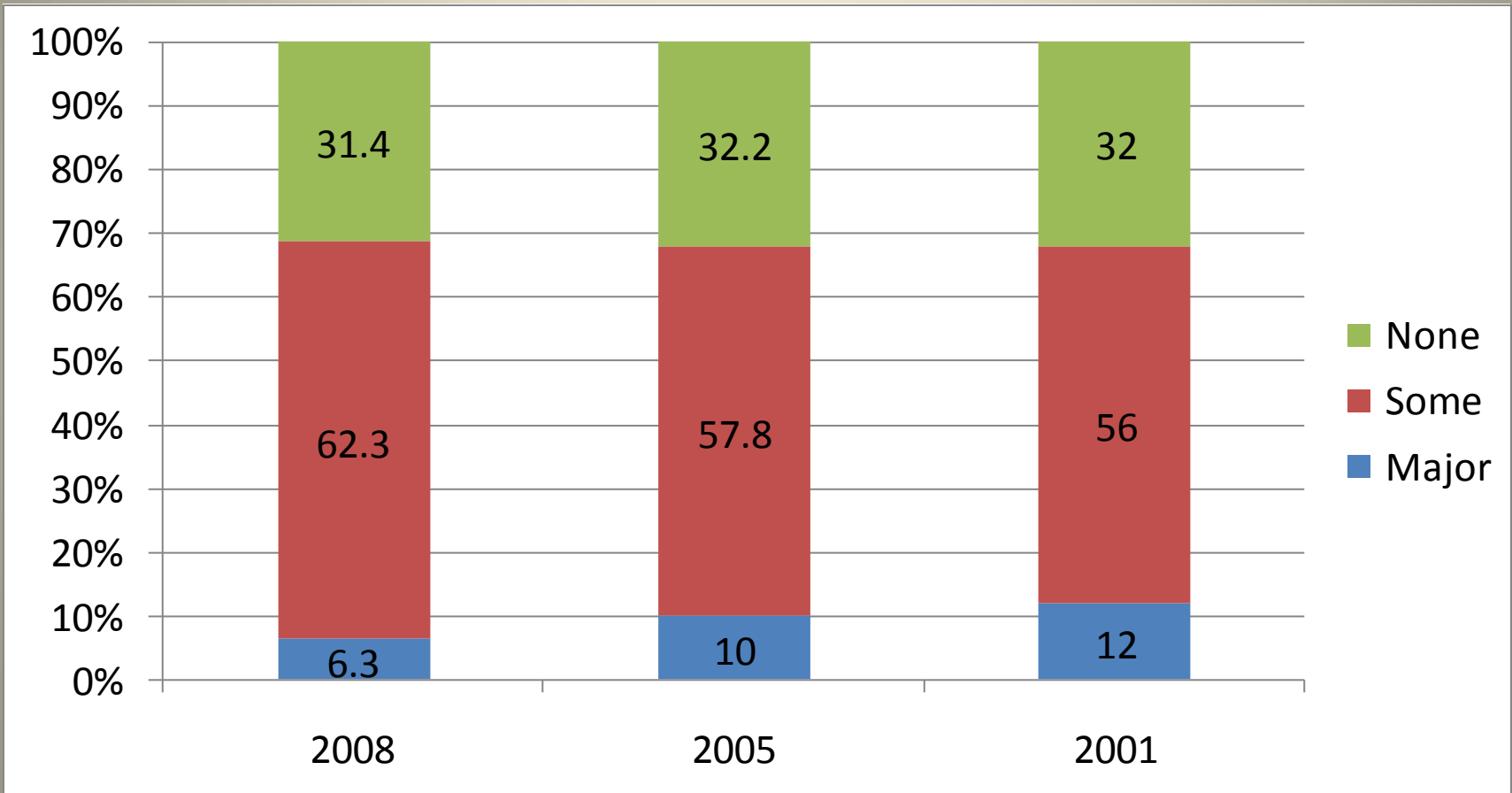
# Top 5 Reasons for attending Stonehill College

	TOTAL			
	2008	2005	2001	1998
<b>Good academic reputation</b>	<b>76%</b>	<b>74%</b>	<b>72%</b>	<b>73%</b>
<b>Size of college</b>	<b>67%</b>	<b>62%</b>	<b>66%</b>	<b>74%</b>
<b>Graduates get good jobs</b>	<b>63%</b>	<b>59%</b>	<b>55%</b>	<b>59%</b>
A visit to campus	66%	67%		
Offered financial assistance	58%		43%	48%
Reputation for social activities		42%		
Offered merit-based scholarship			49%	
Graduates go to top graduate schools				31%

# How much of your first year's educational expenses (room, board, tuition, and fees) do you expect to cover from: (%)

	Family Resources			My Own Resources			Aid (need not be repaid)			Aid (must be repaid)		
	2008	2005	2001	2008	2005	2001	2008	2005	2001	2008	2005	2001
<b>None</b>	10.2%	9.8%	8%	22.4%	32.2%	26%	19.0%	24.7%	25%	36.2%	33.3%	35%
<b>&lt;\$1K</b>	4.0%	3.9%	5%	26.8%	22.2%	30%	2.9%	6.9%	4%	3.1%	2.0%	4%
<b>\$1K to \$2,999</b>	7.1%	5.3%	9%	29.1%	26.3%	30%	11.1%	13.5%	12%	10.7%	14.7%	25%
<b>\$3K to \$5,999</b>	10.0%	5.1%	9%	11.3%	11.2%	10%	16.5%	16.9%	22%	17.0%	20.0%	18%
<b>\$5K to \$9,999</b>	9.0%	12.7%	12%	5.6%	3.7%	3%	14.2%	16.9%	17%	15.5%	12.4%	8%
<b>\$10K +</b>	59.8%	63.3%	58%	4.8%	4.3%	1%	36.4%	21.0%	21%	17.4%	17.6%	11%

# Do you have any concern about your ability to finance your college education?



# Activities Engaged in During the Past Year (%)

	Male				Female				Total			
	1998	2001	2005	2008	1998	2001	2005	2008	1998	2001	2005	2008
Smoked Cigarettes*	9%	5%	3%	4%	10%	4%	1%	2%	10%	5%	2%	2%
Drank Beer	60%	74%	64%	61%	58%	58%	55%	44%	60%	65%	58%	<b>50%</b>
Drank wine or beer	62%	70%	62%	55%	63%	66%	62%	53%	63%	68%	62%	<b>54%</b>
Felt overwhelmed*	24%	20%	12%	22%	49%	44%	43%	45%	40%	33%	32%	<i>36%</i>
Felt depressed*	2%	8%	4%	6%	11%	9%	9%	6%	8%	9%	7%	<b>6%</b>
Performed volunteer work	86%	92%	82%	97%	93%	97%	93%	98%	91%	95%	89%	<b>97%</b>
Was bored in class*	31%	51%	33%	41%	37%	43%	40%	34%	35%	46%	37%	37%
Discussed religion*	24%	22%	34%	32%	19%	18%	32%	27%	20%	19%	33%	<i>28%</i>
Came late to class	57%	67%	63%	59%	65%	59%	54%	46%	62%	62%	58%	<b>51%</b>
Ask teacher for advice after class	21%	22%	19%	28%	28%	38%	24%	38%	25%	31%	22%	<b>35%</b>
Socialized with another race	58%	58%	62%	60%	66%	60%	53%	50%	63%	60%	56%	<i>53%</i>

\*Percentage reporting "frequency" only. Others represent "frequency" or "occasionally."

**Bold** = positive change; *Italic* = negative change

Average Base: -1998 (n=366), 2001 (n=560), 2005 (n=485), 2008 (n=515)

# Student Rated Self “Above Average” or “Highest 10%” as compared with the average person of his/her age (%)

	Male				Female				Total			
	1998	2001	2005	2008	1998	2001	2005	2008	1998	2001	2005	2008
<b>Academic ability</b>	80%	80%	88%	81%	81%	84%	83%	77%	81%	82%	85%	<i>78%</i>
<b>Writing ability</b>	46%	41%	54%	50%	48%	49%	59%	51%	48%	45%	57%	<i>51%</i>
<b>Mathematical ability</b>	50%	50%	52%	49%	42%	39%	37%	35%	45%	44%	43%	<i>40%</i>
<b>Computer skills</b>		38%	37%	39%		16%	21%	24%		26%	27%	<b>29%</b>
<b>Self confidence (intellectual)</b>	67%	64%	68%	70%	46%	43%	51%	50%	54%	52%	57%	57%
<b>Drive to achieve</b>	74%	66%	69%	76%	73%	79%	79%	83%	73%	74%	75%	<b>80%</b>
<b>Understanding of Others</b>			63%	73%			70%	69%			68%	<b>71%</b>
<b>Cooperativeness</b>	72%	68%	71%	79%	75%	78%	78%	81%	74%	74%	76%	<b>80%</b>
<b>Physical health</b>	72%	78%	67%	72%	50%	51%	48%	50%	58%	63%	55%	<b>58%</b>
<b>Public Speaking ability</b>			38%	47%			31%	29%			34%	<b>35%</b>

Blank cells represent missing data for that particular year.

**Bold** = positive change; *Italic* = negative change



Continued

Average Base: - 1998 (n=364), 2001 (n=560), 2005 (n=489), 2008 (n=517)

# Student Rated Self “Above Average” or “Highest 10%” as compared with the average person of his/her age (%) – *continued from previous slide*

	Male				Female				Total			
	1998	2001	2005	2008	1998	2001	2005	2008	1998	2001	2005	2008
<b>Emotional health</b>	60%	60%	61%	58%	50%	47%	44%	44%	54%	53%	50%	<i>49%</i>
<b>Self-understanding</b>	61%	53%	55%	62%	45%	42%	44%	45%	50%	47%	48%	<b>52%</b>
<b>Popularity</b>	50%	48%		51%	31%	36%		26%	38%	42%		35%
<b>Self confidence (social)</b>	51%	51%	51%	58%	30%	37%	39%	37%	37%	43%	44%	<b>45%</b>
<b>Leadership ability</b>	61%	60%	64%	70%	53%	59%	55%	59%	56%	59%	58%	<b>63%</b>
<b>Religiousness</b>		23%	33%			27%	28%			25%	30%	
<b>Spirituality</b>	39%	32%	36%	31%	39%	32%	30%	34%	39%	32%	32%	<b>33%</b>

Blank cells represent missing data for that particular year.

**Bold** = positive change; *Italic* = negative change

*Continued* ➡

# Student Rated Self “Above Average” or “Highest 10%” as compared with the average person of his/her age (%)

2008 - “New”	Male	Female	Total	Peer Group
Ability to see the world from someone else’s perspective	66%	60%	62%	*69%
Tolerance of others with different beliefs	74%	76%	76%	79%
Openness to having my own views challenged	57%	45%	49%	*61%
Ability to discuss and negotiate controversial issues	77%	49%	59%	*66%
Ability to work cooperatively with diverse people	83%	74%	77%	*81%

**\*Statistically significant at the 90% confidence level**

Base: Total respondents – Q1, Q2, Q3 (n=517); Q4 (n=516)

Base: Peer Group Total respondents – Q1 (n=6,774); Q2 (n=6,769); Q3, Q5 (n=6,771); Q4 (n=6,770)

# During the past year, did you “frequently”:

2008 - “New”	Male	Female	Total	Peers
Ask questions in class	57%	68%	64%	65%
Support your opinions with a logical argument	66%	62%	63%	*68%
Seek solutions to problems and explain them to others	57%	62%	60%	60%
Revise your papers to improve your writing	44%	67%	59%	58%
Evaluate the quality or reliability of information you received	39%	37%	38%	*43%
Take a risk because you feel you have more to gain	44%	30%	35%	*41%
Seek alternative solutions to a problem	47%	36%	40%	*47%
Look up scientific research articles and resources	20%	19%	19%	*27%
Explore topics on your own, even though it was not required for a class	28%	20%	23%	*34%
Accept mistakes as part of the learning process	50%	39%	43%	*53%
Seek feedback on your academic work	45%	59%	54%	57%
Take notes during class	69%	89%	*82%	77%

**\*Statistically significant at the 90% confidence level.**

# Top 6 Probable Careers (%)

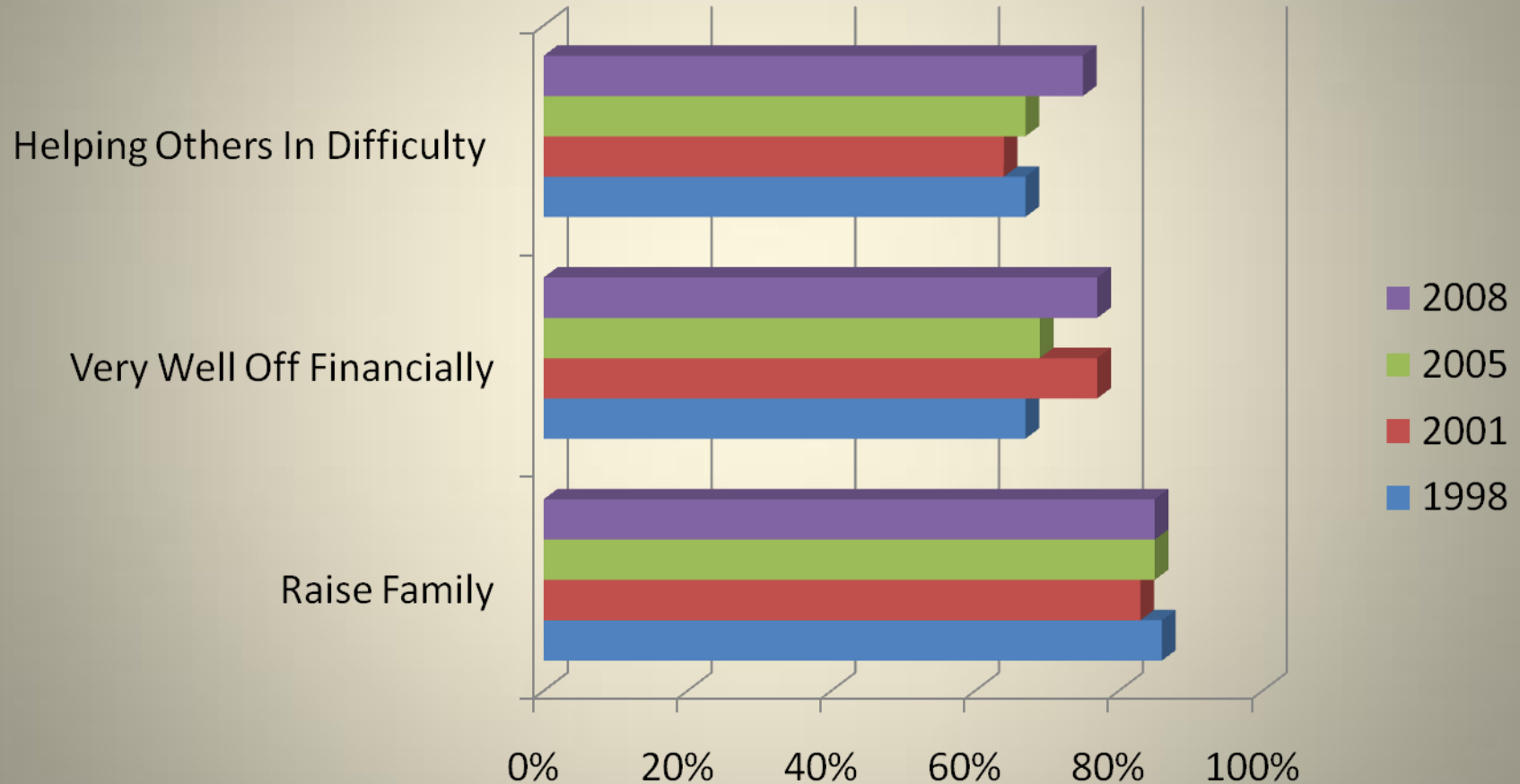
	TOTAL			
	2008	2005	2001	1998
Undecided	23%	23%	23%	16%
<b>Business executive (management, admin.)</b>	<b>13%</b>	<b>9%</b>	<b>13%</b>	<b>10%</b>
<b>Teacher or administrator (elementary)</b>	<b>7%</b>	<b>9%</b>	<b>8%</b>	<b>14%</b>
Lawyer (attorney) or Judge	5%	7%	7%	6%
Teacher or administrator (secondary)	6%	6%	6%	5%
Physician	6%	5%	5%	6%

Base: Total Respondents – 2008 (n=490), 2005 (n=474), 2001 (n=543), 1998 (n=341)

# Political Orientation (%)

	Male				Female				Total			
	1998	2001	2005	2008	1998	2001	2005	2008	1998	2001	2005	2008
<b>Far Left</b>	2%	3%	3%	3%	0.4%	1%	1%	3%	1%	2%	2%	3%
<b>Liberal</b>	20%	27%	27%	26%	12%	31%	31%	35%	15%	29%	30%	32%
<b>Middle of the Road</b>	60%	56%	43%	44%	76%	55%	48%	48%	71%	55%	46%	46%
<b>Conservative</b>	16%	14%	23%	25%	11%	13%	19%	14%	13%	13%	20%	18%
<b>Far Right</b>	2%	0.4%	3%	2%	0%	0.3%	1%	1%	1%	0.4%	2%	1%

# Top three objectives considered to be essential or very important (%)



# Student Estimates: Chances are very good that s/he will (%)

	Male				Female				Total			
	1998	2001	2005	2008	1998	2001	2005	2008	1998	2001	2005	2008
<b>Change career choice</b>	12%	20%	14%	14%	21%	23%	20%	26%	18%	21%	18%	12%
<b>Make at least "B" average</b>	72%	58%	67%	67%	65%	74%	71%	69%	68%	67%	69%	68%
<b>Be satisfied with college</b>	66%	49%	44%	53%	68%	65%	60%	59%	68%	58%	55%	57%
<b>Participate in volunteer / community service</b>	31%	25%	27%	35%	56%	56%	55%	54%	48%	42%	45%	47%
<b>Socialize with someone of another racial group</b>		51%	58%	59%		67%	61%	61%		60%	60%	60%
<b>Transfer to another college before graduating</b>	6%	3%	6%	5%	5%	2%	2%	3%	6%	3%	4%	4%
<b>Have a roommate of different race/ethnicity</b>				21%				20%				20%
<b>Get tutoring help in specific courses</b>				17%				24%				22%

Average Base: - 1998 (n=365), 2001 (n=553), 2005 (n=484), 2008 (n=504)

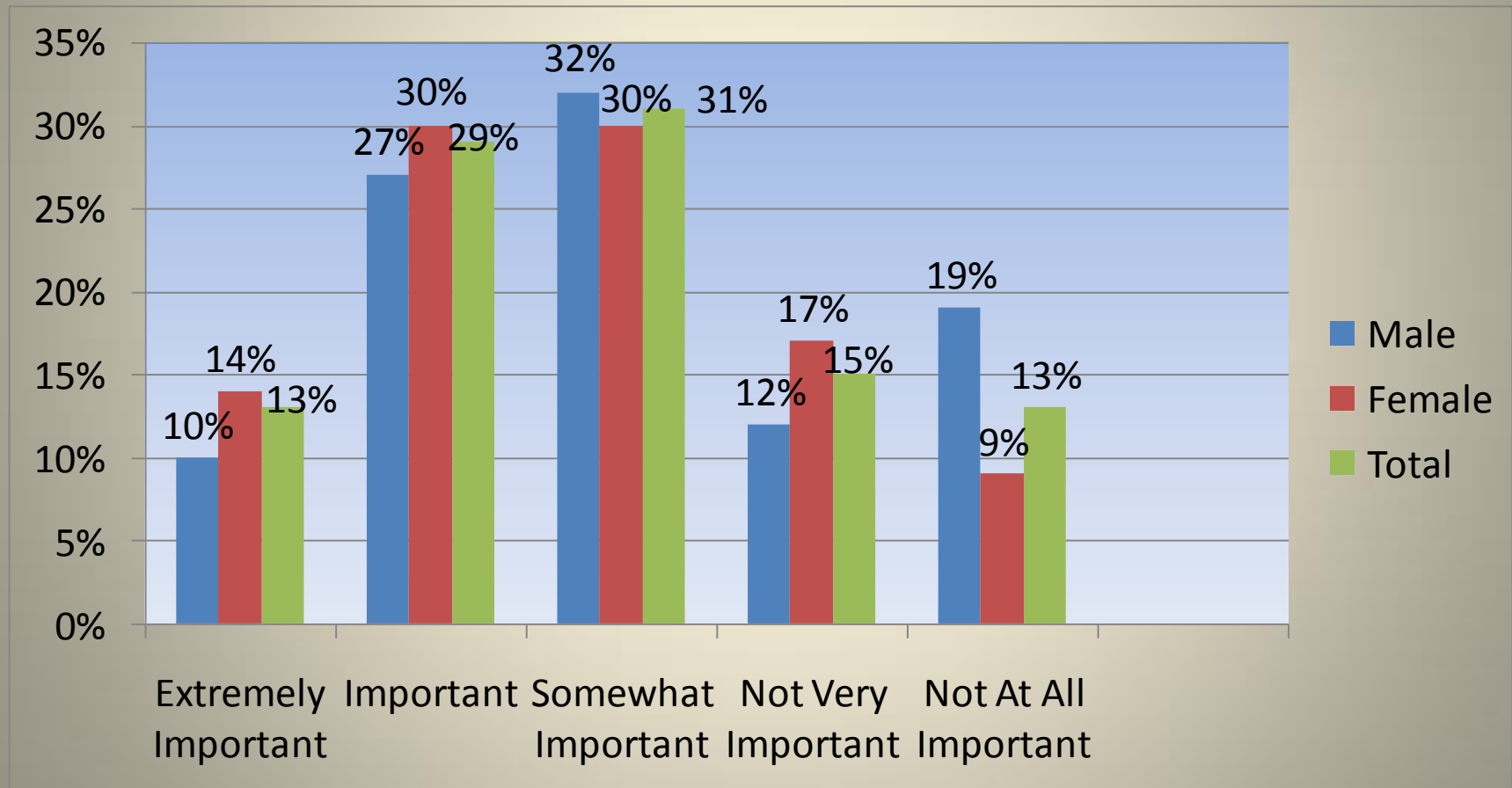
# Student agrees “Strongly” or “Somewhat”

	Male				Female				Total			
	1998	2001	2005	2008	1998	2001	2005	2008	1998	2001	2005	2008
Questions not asked on 2008 CIRP												
Sex is OK if people like each other	50%	66%	56%		31%	38%	26%		38%	50%	37%	
Prohibit racist/sexist speech	60%	55%	51%		79%	72%	69%		72%	64%	63%	
Colleges have the right to ban extreme speakers from campus				52%				40%				44%
Legal status for same sex couples	51%	63%	59%	67%	75%	79%	73%	85%	67%	72%	68%	79%
Government should control handgun sales	87%	82%	75%	71%	97%	96%	94%	84%	93%	90%	87%	80%
Students from disadvantaged social backgrounds should be given preferential treatment in college admissions				39%				25%				30%
The federal government should raise taxes to reduce the deficit				33%				23%				27%
Addressing global warming should be a federal priority				82%				83%				83%

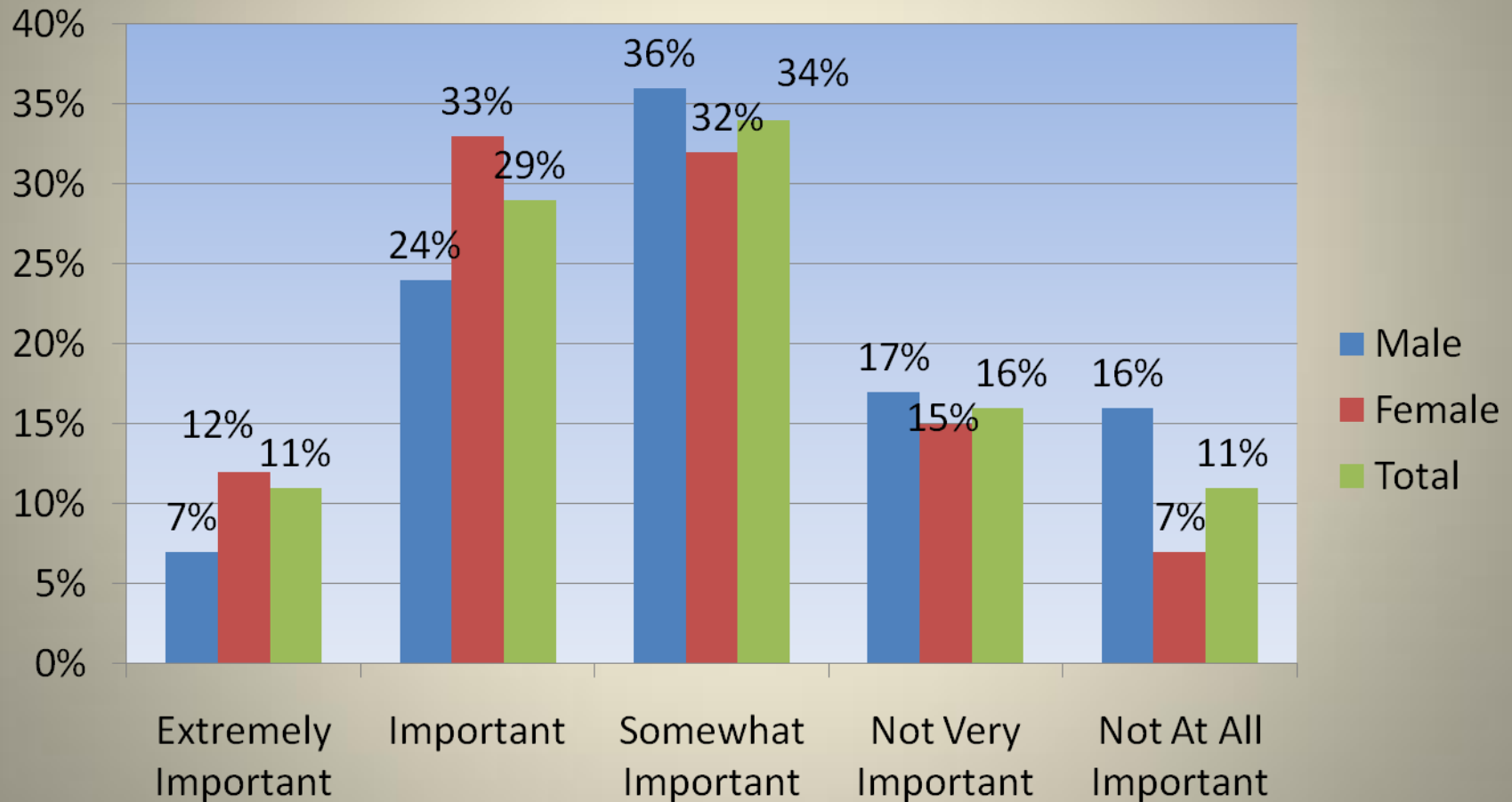
Average Base:- 1998 (n=363), 2001 (n=551), 2005 (n=479), 2008 (n=494)

# Stonehill College Questions 2008

Which of the following statements best describes the *influence* your parents had on your decision *to apply* Stonehill.

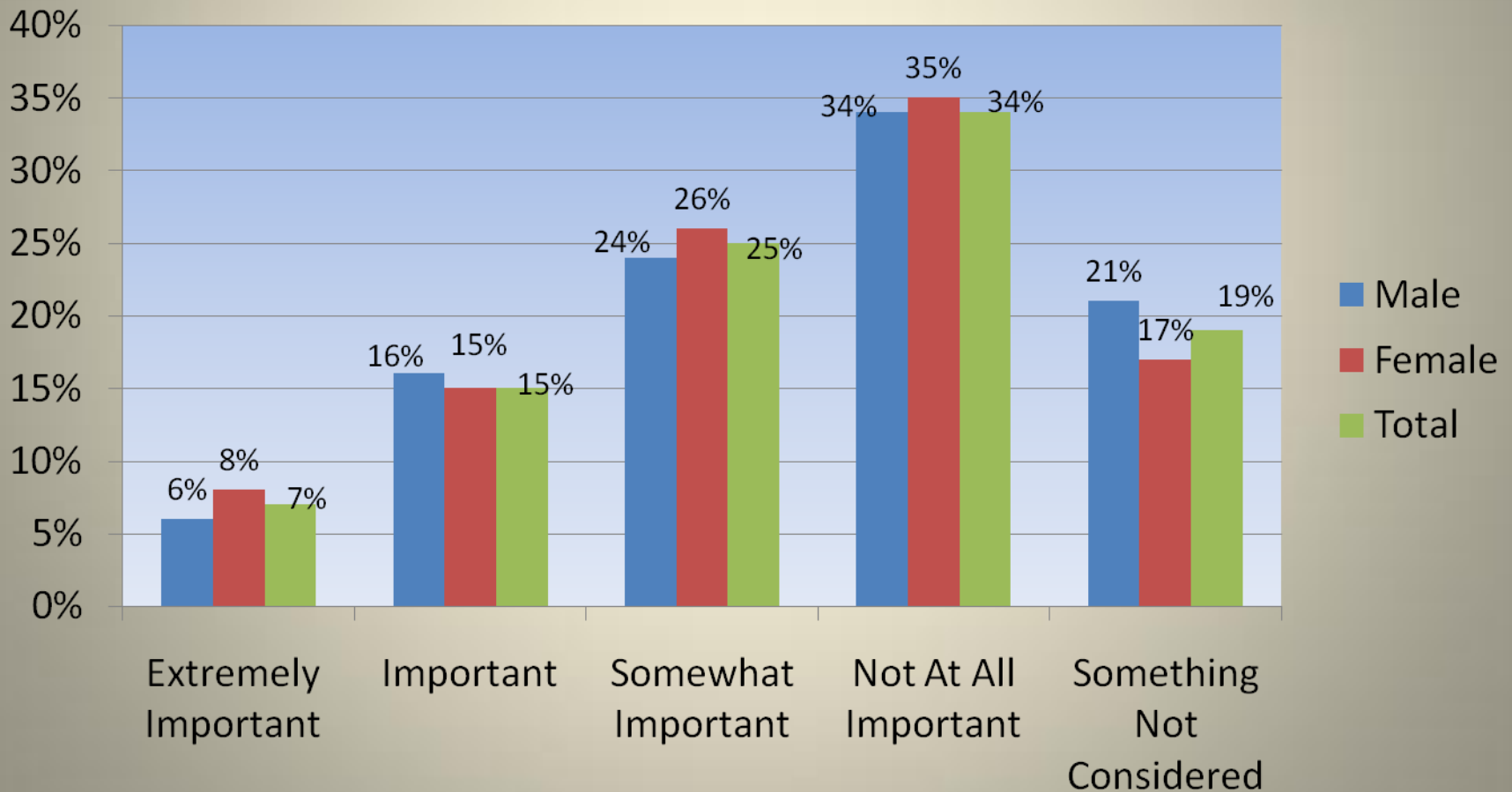


Which of the following statements best describes the *influence* your parents had on your decision *to attend* Stonehill.



NEW

Which of the following statements best describes the *influence* that being a Catholic institution had on your decision to *attend* Stonehill.

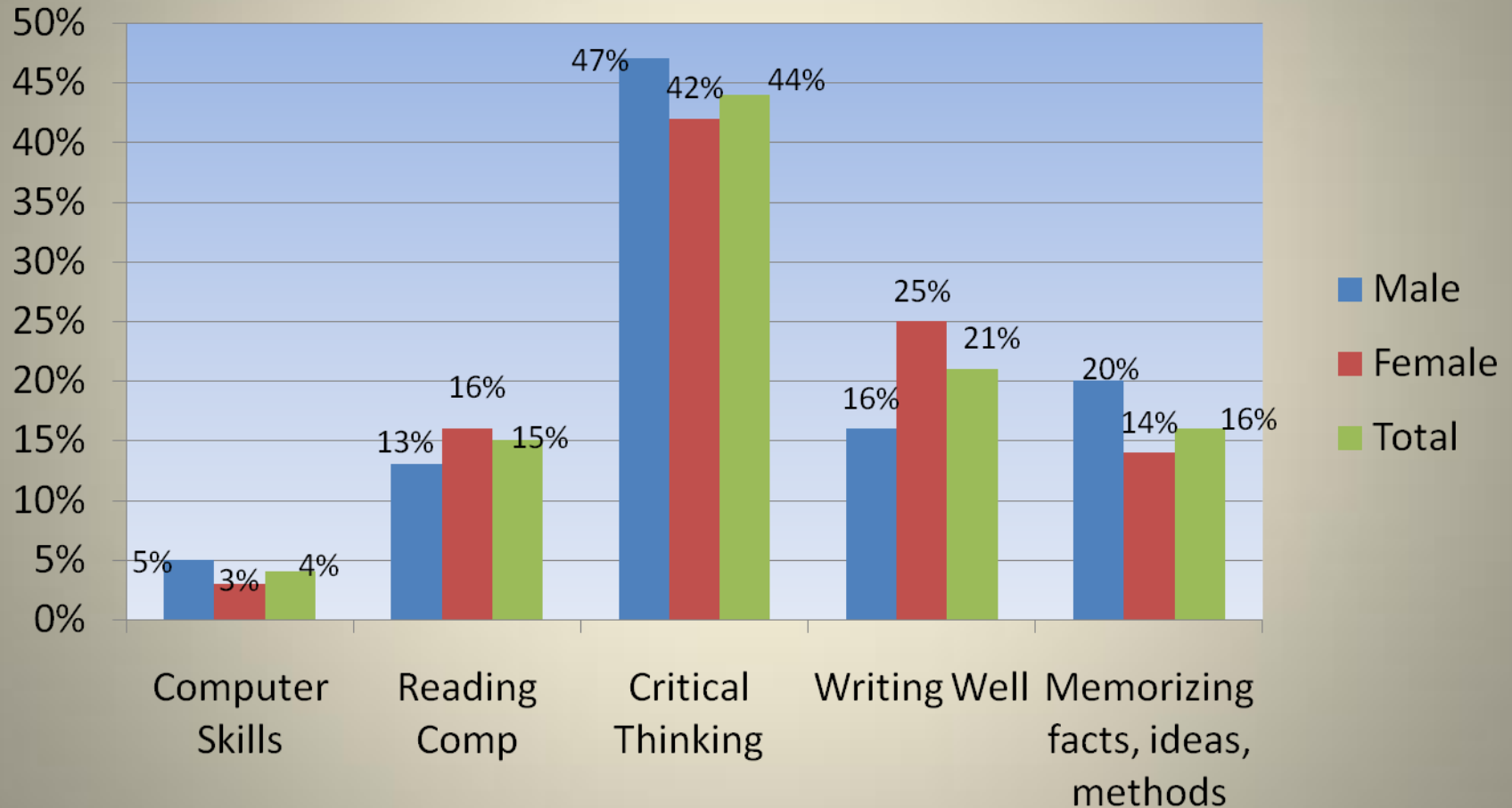


**NEW**

# Having enrolled in a Catholic College, I most expect to:

<b>2008</b>	<b>Male</b>	<b>Female</b>	<b>Total</b>
Have extra-curricular opportunities to explore issues related to service of others and/or the spiritual life	18%	26%	<b>23%</b>
Have the opportunity to take courses in which Catholicism is seriously examined	10%	3%	<b>6%</b>
Have the opportunity to take courses in which traditions other than Catholicism will be explored	18%	14%	<b>15%</b>
Live in an environment where religious practice is supported and nurtured	26%	31%	<b>29%</b>
None of the above	28%	27%	<b>27%</b>

The academic skill that I think will be most valuable in contributing to my success in college is:



# How many hours per week do you plan to do academic work this semester?

	<b>TOTAL</b>			
	<b>2008</b>	<b>2005</b>	<b>2001</b>	<b>1998</b>
<b>Less than 5 hours</b>	2%	3%	1%	1%
<b>5-10 hours</b>	14%	20%	14%	15%
<b>11-15 hours</b>	36%	37%	40%	40%
<b>16-20 hours</b>	35%	27%	33%	30%
<b>Over 20 hours</b>	13%	13%	13%	14%

How many hours per week do you plan to engage in extra-curricular and co-curricular activities (sports, clubs and organizations, community service) this year?

	2005			2008		
	Male	Female	Total	Male	Female	Total
<b>Less than 5 hours</b>	12%	12%	<b>12%</b>	11%	9%	<b>10%</b>
<b>5-10 hours</b>	45%	48%	<b>47%</b>	38%	53%	<b>47%</b>
<b>11-15 hours</b>	25%	28%	<b>27%</b>	30%	30%	<b>30%</b>
<b>16-20 hours</b>	12%	9%	<b>10%</b>	15%	5%	<b>9%</b>
<b>Over 20 hours</b>	6%	3%	<b>4%</b>	6%	3%	<b>4%</b>

# What do you anticipate overall GPA will be at the end of your first semester?

	2005			2008		
	Male	Female	Total	Male	Female	Total
<b>A (3.75-4.0)</b>	11%	11%	<b>11%</b>	10%	8%	<b>9%</b>
<b>A- (3.5-3.75)</b>	41%	49%	<b>46%</b>	36%	38%	<b>37%</b>
<b>B+ (3.25-3.5)</b>	32%	30%	<b>31%</b>	37%	42%	<b>41%</b>
<b>B (3.0-3.25)</b>	15%	19%	<b>12%</b>	17%	12%	<b>14%</b>
<b>C &gt;(2.75-3.0)</b>	1%	0%	<b>1%</b>	0%	0%	<b>0%</b>

# Average number of alcohol drinks consumed in a week. (%)

	Male				Female				Total			
	1998	2001	2005	2008	1998	2001	2005	2008	1998	2001	2005	2008
None	47%	37%	56%	49%	52%	47%	58%	61%	<b>51%</b>	<b>43%</b>	<b>57%</b>	<b>57%</b>
One	11%	11%	8%	16%	13%	12%	14%	14%	<b>12%</b>	<b>12%</b>	<b>12%</b>	<b>15%</b>
Two or Three	8%	13%	16%	15%	14%	21%	17%	12%	<b>12%</b>	<b>17%</b>	<b>16%</b>	<b>13%</b>
Four or Five	8%	9%	9%	11%	12%	10%	9%	7%	<b>11%</b>	<b>9%</b>	<b>9%</b>	<b>9%</b>
Six or more	26%	30%	12%	8%	8%	10%	4%	7%	<b>14%</b>	<b>19%</b>	<b>7%</b>	<b>7%</b>

Base: Total Respondents – 1998 (n=367), 2001 (n=546), 2005 (n=480), 2008 (n=502)

# Within the last year about how often have you used alcohol (beer, wine, liquor) (%)

	Male				Female				Total			
	1998	2001	2005	2008	1998	2001	2005	2008	1998	2001	2005	2008
<b>Did not use</b>	29%	21%	31%	30%	25%	29%	39%	44%	26%	25%	36%	39%
<b>1 to 6 times a year</b>	26%	29%	26%	24%	38%	30%	31%	26%	34%	30%	29%	25%
<b>1 to 2 times a month</b>	20%	30%	27%	31%	27%	32%	22%	21%	24%	31%	24%	25%
<b>1 to 5 times a week</b>	24%	19%	15%	14%	10%	9%	8%	9%	15%	14%	11%	11%
<b>Every day</b>	<1%	<1%	<1%	1%	0%	0%	0%	0%	<1%	<1%	<1%	1%

Compared to other colleges with which you are familiar, I believe that this campus' use of alcohol is...

	2005			2008		
	Male	Female	Total	Male	Female	Total
<b>Much greater than other campuses</b>	3%	4%	<b>4%</b>	1%	1%	<b>1%</b>
<b>Greater than other campuses</b>	5%	5%	<b>5%</b>	6%	6%	<b>6%</b>
<b>About the same as other campuses</b>	49%	53%	<b>52%</b>	59%	57%	<b>58%</b>
<b>Less than other campuses</b>	32%	29%	<b>30%</b>	29%	32%	<b>31%</b>
<b>Much less than other campuses</b>	10%	8%	<b>9%</b>	6%	5%	<b>5%</b>

Base: Total Respondents – 2008 (n=499), 2005 (n=472)

Thank you.