



Identity Finder

Stonehill College Information Technology

Help Desk 508-565-HELP (4357) helpdesk@stonehill.edu

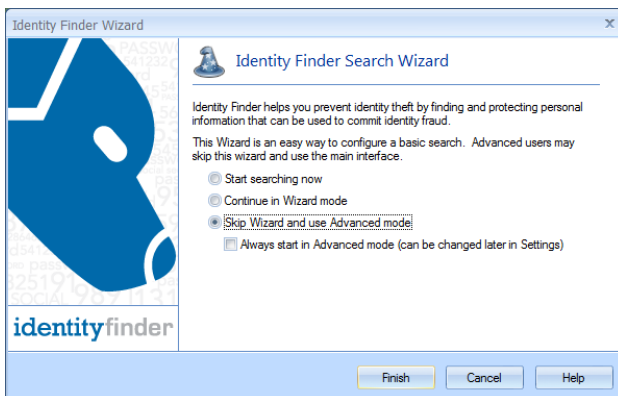
Schedule Identity Finder to Scan Regularly

Step 1.

If you wish to **schedule regular scans** with the program launch Identity Finder from the Start menu.

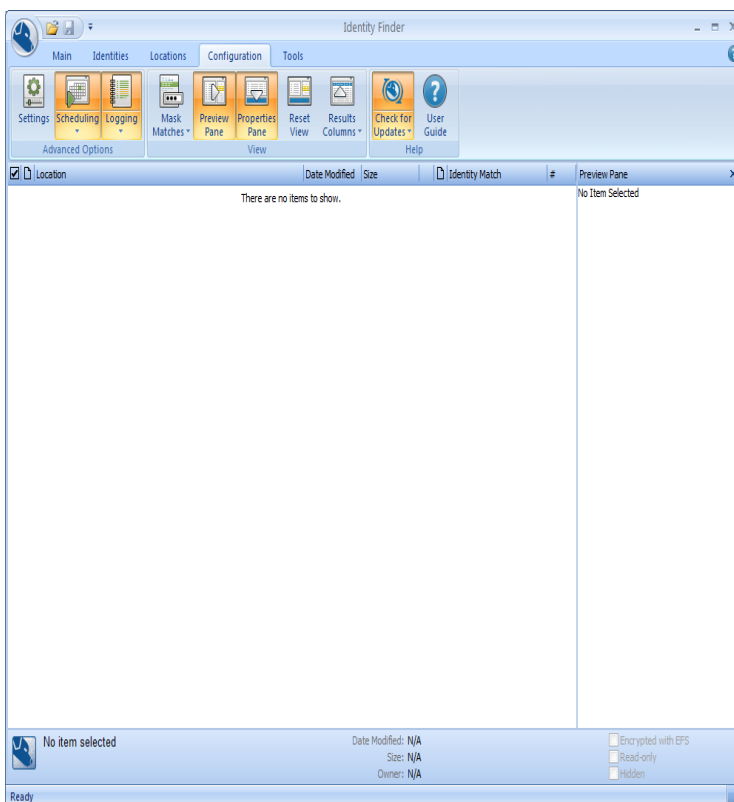
You will be prompted to enter your Windows username and password to schedule the weekly search. After filling in this information, click **OK**.

Select “Skip Wizard and use Advanced mode” and click next



Step 2.

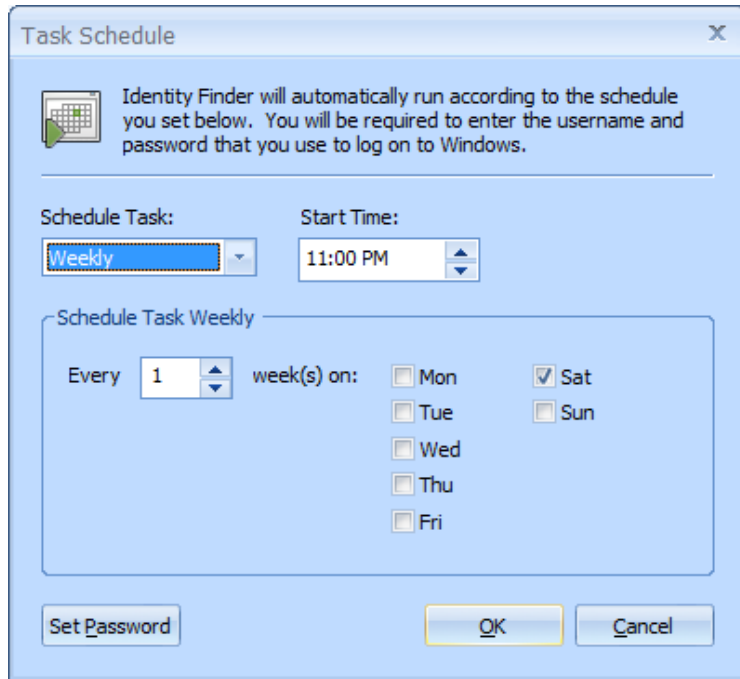
Select the “Configuration” tab from the top and click the arrow under “Scheduling” select “Customize Scheduling”



Step 3.

Check the box labeled "Schedule Identity Finder" and then click "Configure"

Select your desired time and frequency and click OK.



Enter your Stonehill password and click OK. and OK again. Click apply when done.

Don't forget to update this password when you update your Stonehill password.

You can now close the program. You are finished configuring the scheduled scan, weekly, on Saturdays at 11pm.

