



Using Identity Finder to Scan Your Computer

Stonehill College Information Technology
Help Desk 508-565-HELP (4357) helpdesk@stonehill.edu

Windows

Step 1.

Open the Identity Finder Program and enter the password that you originally created during the configuration. This password is separate from your Stonehill password. It is imperative that you remember this password at all times.

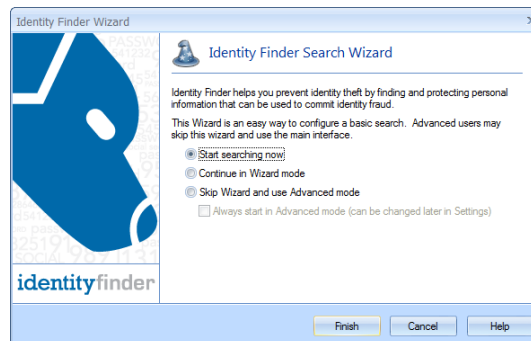
If you have forgotten your password, the Help Desk **will not be able to reset it or create a new one** for you.

Click **Next**.



Step 2

Select the button for “Start Searching Now” and click **Finish**



Step 3

The scan will begin. While the scan is going, you can continue working on your computer like you normally would. Depending on the number of files that need to be scanned, the scan could take anywhere from 10 minutes to over an hour. You can pause the scan at any time.

Please see the secure or delete the sensitive data found in the scan.

