



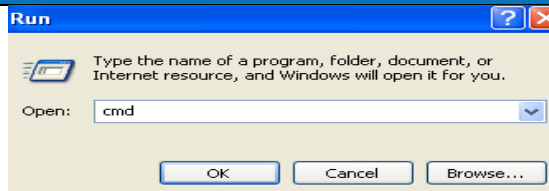
Checking and Renewing IP

Stonehill College Information Technology
Help Desk 508-565-HELP (4357) helpdesk@stonehill.edu

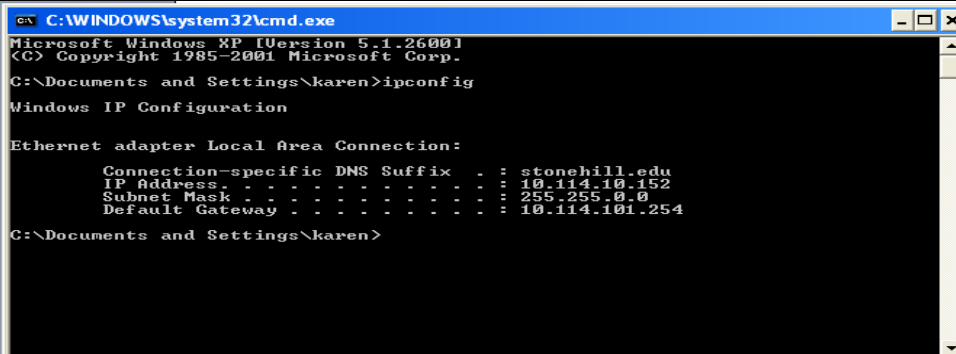
Windows XP

Start-Run-Type cmd in command prompt.

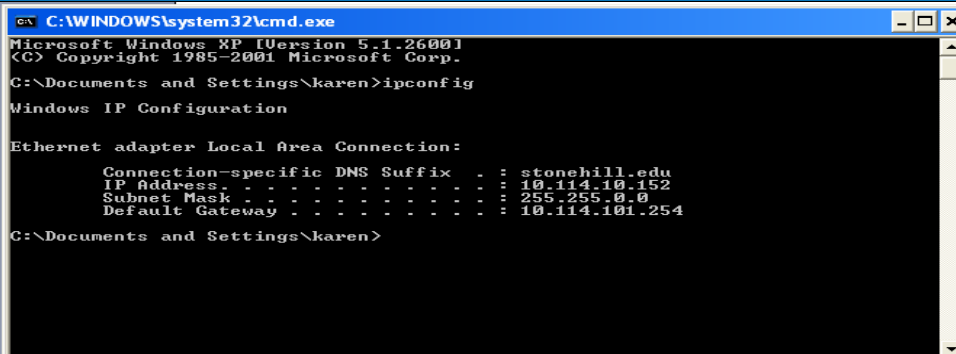
Click OK



To get the IP address, type ipconfig
In the DOS prompt.

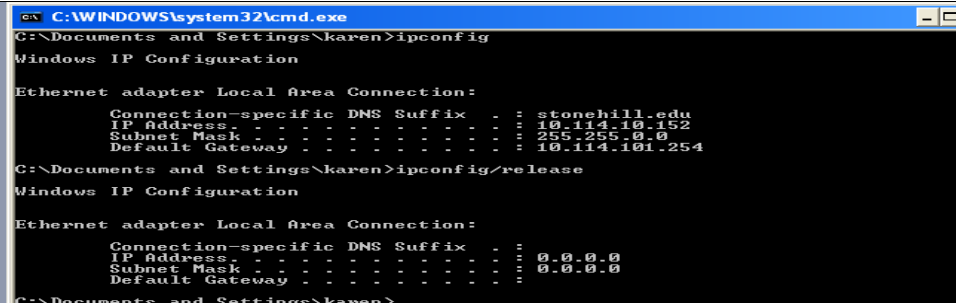


Note the IP address; you will need this if you need to call a technician.



To renew the IP type ipconfig/release

The IP will change to zeros.



Now type ipconfig/renew.

Note the IP address.

Close out of the DOS prompt.

```
C:\WINDOWS\system32\cmd.exe
C:\Documents and Settings\karen>ipconfig/release
Windows IP Configuration

Ethernet adapter Local Area Connection:

    Connection-specific DNS Suffix  . : 
    IP Address . . . . . : 0.0.0.0
    Subnet Mask . . . . . : 0.0.0.0
    Default Gateway . . . . . : 

C:\Documents and Settings\karen>ipconfig/renew
Windows IP Configuration

Ethernet adapter Local Area Connection:

    Connection-specific DNS Suffix  . : stonehill.edu
    IP Address . . . . . : 10.114.10.152
    Subnet Mask . . . . . : 255.255.0.0
    Default Gateway . . . . . : 10.114.101.254
```